

3SMC5.0CA THRU 3SMC170CA
SURFACE MOUNT BI-DIRECTIONAL
GLASS PASSIVATED JUNCTION
SILICON TRANSIENT
VOLTAGE SUPPRESSOR
3000 WATTS, 5.0 THRU 170 VOLTS

CentralTM

Semiconductor Corp.

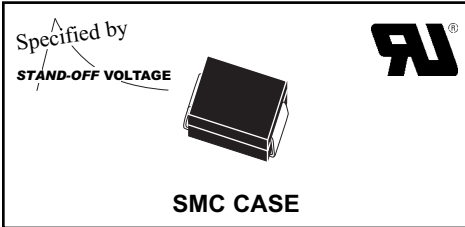
DESCRIPTION:

The CENTRAL SEMICONDUCTOR 3SMC5.0CA Series types are Surface Mount Bi-Directional Glass Passivated Junction Transient Voltage Suppressors designed to protect voltage sensitive components from high voltage transients.

THIS DEVICE IS MANUFACTURED WITH A GLASS PASSIVATED CHIP FOR OPTIMUM RELIABILITY.

Note: For Uni-directional devices, please refer to the 3SMC5.0A Series data sheet.

MARKING CODE: SEE MARKING CODE ON ELECTRICAL CHARACTERISTIC TABLE



• This series is UL listed, UL file number E130224

MAXIMUM RATINGS: ($T_A=25^{\circ}\text{C}$ unless otherwise noted)

Peak Power Dissipation (Note 1)
 Peak Forward Surge Current (JEDEC Method)
 Operating and Storage Junction Temperature

SYMBOL UNITS

P_{DM} 3000 W
 I_{FSM} 200 A
 T_J, T_{stg} -65 to +150 $^{\circ}\text{C}$

ELECTRICAL CHARACTERISTICS: ($T_A=25^{\circ}\text{C}$ unless otherwise noted)

TYPE	REVERSE STAND-OFF VOLTAGE		BREAKDOWN VOLTAGE ($V_{BR} @ I_T$)		TEST CURRENT I_T mA	MAXIMUM REVERSE LEAKAGE $I_R @ V_{RWM}$ μA	MAXIMUM CLAMPING VOLTAGE $V_C @ I_{PP}$ V	PEAK PULSE CURRENT (Note 1) I_{PP} A	MARKING CODE
	V_{RWM}	MIN	MAX	I_T					
	V	V	V	mA					
3SMC5.0CA	5.0	6.40	7.25	10	2000	9.2	326.0	CIDE	
3SMC6.0CA	6.0	6.67	7.67	10	2000	10.3	291.3	CIDG	
3SMC6.5CA	6.5	7.22	8.30	10	1000	11.2	267.9	CIDK	
3SMC7.0CA	7.0	7.78	8.95	10	400	12.0	250.0	CIDM	
3SMC7.5CA	7.5	8.33	9.58	1.0	200	12.9	232.6	CIDP	
3SMC8.0CA	8.0	8.89	10.23	1.0	100	13.6	220.6	CIDR	
3SMC8.5CA	8.5	9.44	10.82	1.0	50	14.4	208.4	CIDT	
3SMC9.0CA	9.0	10.0	11.5	1.0	20	15.4	194.8	CIDV	
3SMC10CA	10	11.1	12.8	1.0	5.0	17.0	176.4	CIDX	
3SMC11CA	11	12.2	14.0	1.0	5.0	18.2	184.8	CIDZ	
3SMC12CA	12	13.3	15.3	1.0	5.0	19.9	150.6	CIEE	
3SMC13CA	13	14.4	16.5	1.0	5.0	21.5	139.4	CIEG	
3SMC14CA	14	15.6	17.9	1.0	5.0	23.2	129.4	CIEK	
3SMC15CA	15	16.7	19.2	1.0	5.0	24.4	123.0	CIEM	
3SMC16CA	16	17.8	20.5	1.0	5.0	26.0	115.4	CIEP	
3SMC17CA	17	18.9	21.7	1.0	5.0	27.6	106.6	CIER	
3SMC18CA	18	20.0	23.3	1.0	5.0	29.2	102.8	CIET	
3SMC20CA	20	22.2	25.5	1.0	5.0	32.4	92.6	CIEV	
3SMC22CA	22	24.4	28.0	1.0	5.0	35.5	84.4	CIEX	
3SMC24CA	24	26.7	30.7	1.0	5.0	38.9	77.2	CIEZ	
3SMC26CA	26	28.9	33.2	1.0	5.0	42.1	71.2	CIFE	
3SMC28CA	28	31.1	35.8	1.0	5.0	45.4	66.0	CIFG	
3SMC30CA	30	33.3	38.3	1.0	5.0	48.4	62.0	CIFK	

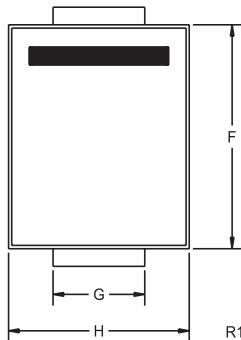
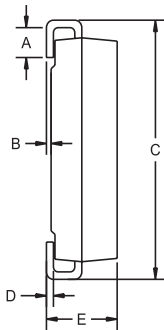
Notes: (1) Non-repetitive 10x1,000 μs pulse

R4 (3-March 2008)

ELECTRICAL CHARACTERISTICS - Continued:

TYPE	REVERSE STAND-OFF VOLTAGE	BREAKDOWN VOLTAGE (V _{BR} @ I _T)		TEST CURRENT	MAXIMUM REVERSE LEAKAGE	MAXIMUM CLAMPING VOLTAGE	PEAK PULSE CURRENT (Note 1)	MARKING CODE
	V _{RWM}	MIN	MAX	I _T	I _R @ V _{RWM}	V _C @ I _{PP}	I _{PP}	
	V	V	V	mA	μA	V	A	
3SMC33CA	33	36.7	42.2	1.0	5.0	53.3	56.2	CIFM
3SMC36CA	36	40.0	46.0	1.0	5.0	58.1	51.6	CIFP
3SMC40CA	40	44.4	51.1	1.0	5.0	64.5	46.4	CIFR
3SMC43CA	43	47.8	54.9	1.0	5.0	69.4	43.2	CIFT
3SMC45CA	45	50.0	57.5	1.0	5.0	72.7	41.2	CIFV
3SMC48CA	48	53.3	61.3	1.0	5.0	77.4	38.8	CIFX
3SMC51CA	51	56.7	65.2	1.0	5.0	82.4	36.4	CIFZ
3SMC54CA	54	60.0	69.0	1.0	5.0	87.1	34.4	CIGE
3SMC58CA	58	64.4	74.1	1.0	5.0	93.6	32.0	CIGG
3SMC60CA	60	66.7	76.7	1.0	5.0	96.8	31.0	CIGK
3SMC64CA	64	71.1	81.8	1.0	5.0	103	29.2	CIGM
3SMC70CA	70	77.8	89.5	1.0	5.0	113	26.6	CIGP
3SMC75CA	75	83.3	95.8	1.0	5.0	121	24.8	CIGR
3SMC78CA	78	86.7	99.7	1.0	5.0	126	22.8	CIGT
3SMC85CA	85	94.4	108.2	1.0	5.0	137	20.8	CIGV
3SMC90CA	90	100.0	115.5	1.0	5.0	146	20.6	CIGX
3SMC100CA	100	111.0	128.0	1.0	5.0	162	18.6	CIGZ
3SMC110CA	110	122.0	140.5	1.0	5.0	177	16.8	CIHE
3SMC120CA	120	133.0	153.0	1.0	5.0	193	15.6	CIHG
3SMC130CA	130	144.0	165.5	1.0	5.0	209	14.4	CIHK
3SMC150CA	150	167.0	192.5	1.0	5.0	243	12.4	CIHM
3SMC160CA	160	178.0	205.0	1.0	5.0	259	11.6	CIHP
3SMC170CA	170	189.0	217.5	1.0	5.0	275	11.0	CIHR

SMC - CASE - MECHANICAL OUTLINE



SYMBOL	DIMENSIONS			
	INCHES		MILLIMETERS	
	MIN	MAX	MIN	MAX
A	0.030	0.060	0.76	1.52
B	0.004	0.008	0.10	0.20
C	0.305	0.320	7.75	8.13
D	0.006	0.012	0.15	0.31
E	0.079	0.103	2.00	2.62
F	0.260	0.280	6.60	7.11
G	0.108	0.124	2.75	3.15
H	0.220	0.245	5.59	6.22

SMC (REV: R1)